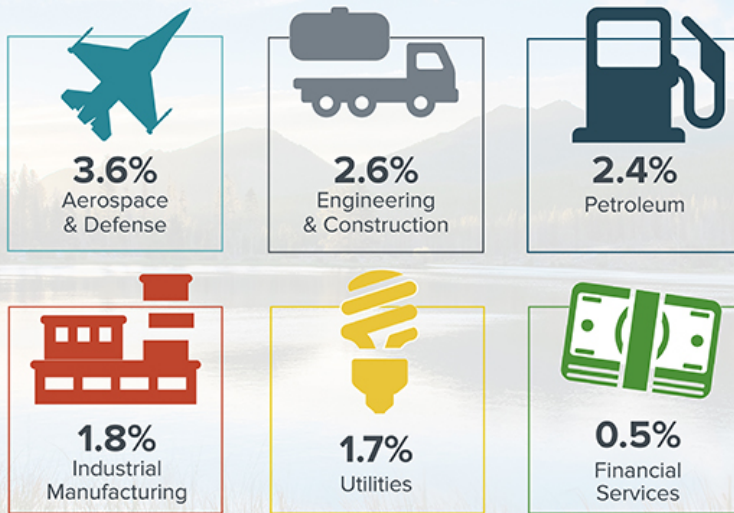


Supply Management Employees

As a Percentage of Company Employees

Average by Industry



CAPS
RESEARCH

Source: *The Metrics of Supply Management*, CAPS Research, 2016.

How is Your Supply Management Group Staffed?

The strategic role of the supply management group is growing, but at many companies, existing head-count levels and resources are unchanged. Supply management personnel as a percentage of all company employees (regardless of industry) is holding steady — 1.8 percent in 2016, 1.9 percent in 2015 and 1.7 percent in 2014.

Source: *The Metrics of Supply Management*, CAPS Research, July 2016.

Measure up. Move Forward.

CAPS Research, a non-profit organization advancing the profession of procurement and supply management through outstanding unbiased research, benchmarking, and peer-to-peer networks. In partnership with the Institute for Supply Management® and W. P. Carey School of Business at Arizona State University we empower supply management professionals with profound discovery, powerful connection, and clear foresight. [Learn more about CAPS Research benchmarking opportunities!](#)

© 2017, Arizona Board of Regents on behalf of Arizona State University